

# ONE257



## FEATURES

- 3 Bedrooms
- Large Kitchen / Living / Dining Area
- Double Lock-Up Garage
- Great Outdoor Alfresco
- Ensuite & WIR
- Separate Study Room

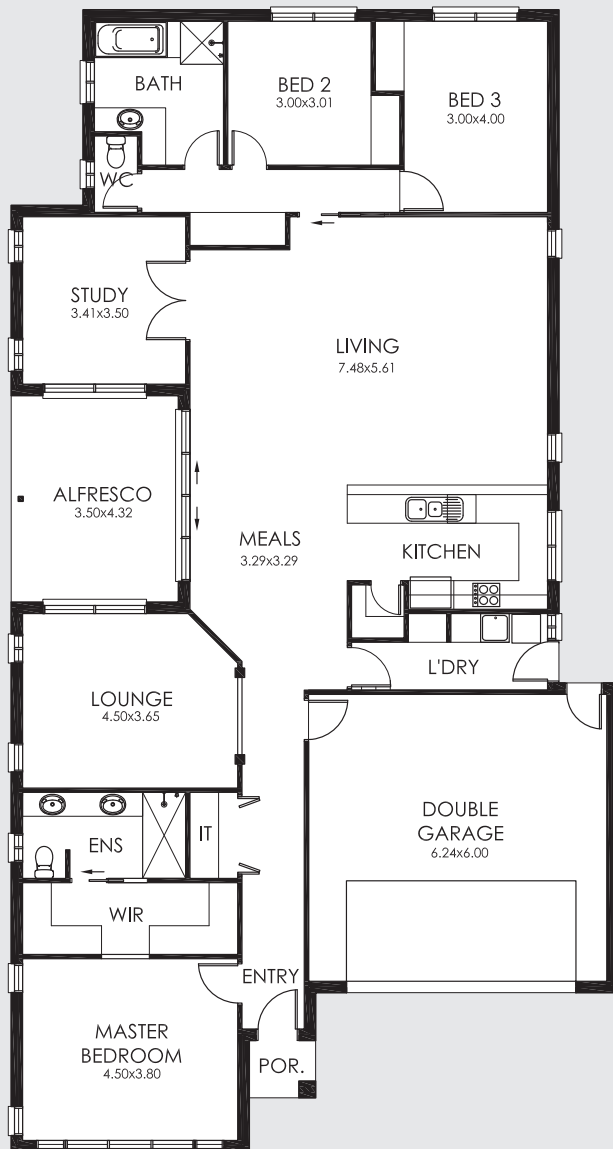
## AREA SPECIFICATIONS

Living Area	199.65m <sup>2</sup>
Garage	40.70m <sup>2</sup>
Porch	1.67m <sup>2</sup>
Alfresco	15.12m <sup>2</sup>
<b>TOTAL</b>	<b>257.14m<sup>2</sup></b>

Width 12.70m and Depth 23.89m

**TASSIE  
HOMES**  
Innovative & Affordable

e. [sales@tassiehomes.com.au](mailto:sales@tassiehomes.com.au)  
w. [www.tassiehomes.com.au](http://www.tassiehomes.com.au)  
p. 13 000 TASSIE



© TASSIE HOMES 2015. PLANS AND FACADES ARE ARTISTS IMPRESSIONS ONLY AND ARE NOT DRAWN TO SCALE. DIMENSIONS, ROOM SIZES AND AREAS MAY VARY